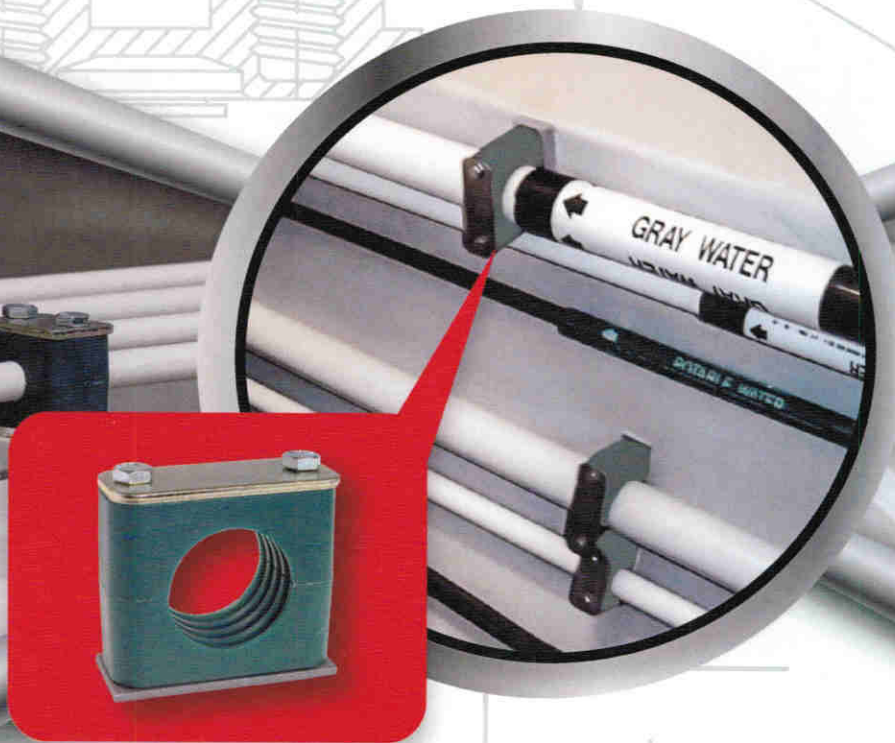


**CLICK
BOND®**

**ADHESIVE - BONDED
FASTENER TECHNOLOGY**

NEW PRODUCT

CLAMP MOUNT



- **Quick and Easy Pipe and Hose Installations**
- **Vibration and Noise Reduction Features**
- **Eliminates Need for Hot Work, Fire Watch, and Gas Freeing**
- **Facilitates Modifications and Repair**
- **Protects Against Galvanic Corrosion**

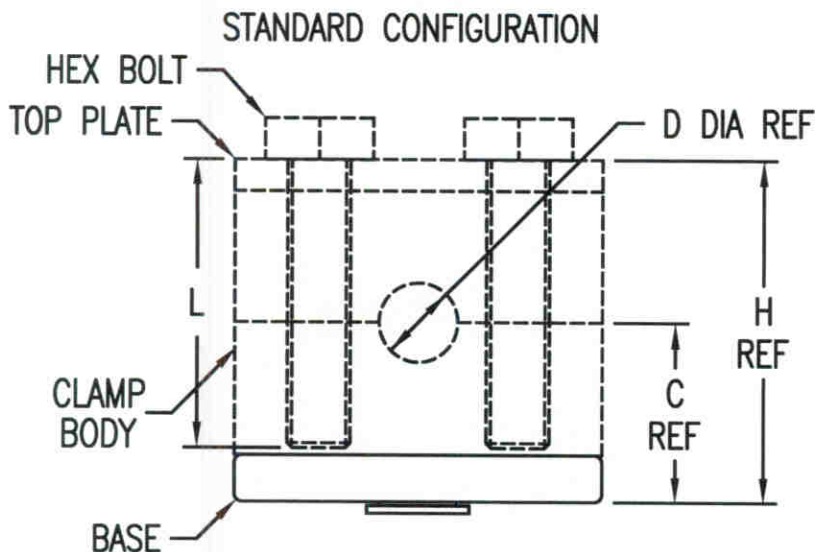
PIONEERING > ADVANCED > SOLUTIONS

CLAMP MOUNT CM459

The Adhesive - Bonded Advantage

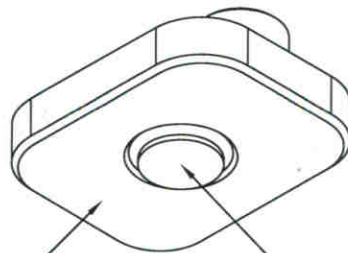
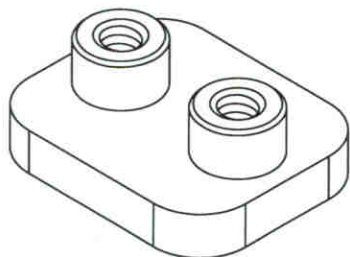
Click Bond's new clamp mount can be adhesively bonded to almost any material, including metals, thermoplastics, and composites. The adhesive bond is strong and durable, and the clamp mount allows for easy installation of pipes, tubes, hoses, cables, and other components.

Engineered for a broad range of applications, these mounts offer greater work sequence flexibility, reduce holes and potential leak paths, and require no hot work. Once installed, they provide for significantly easier maintenance and repairs.

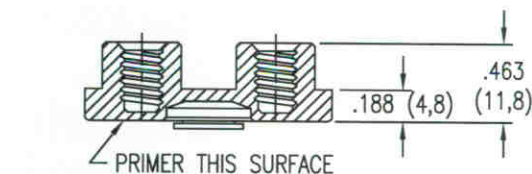
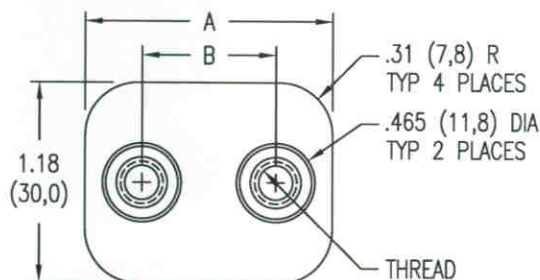


DIMENSION DATA

CLAMP BODY	A	B
1A	1.46 (37)	.79 (20)
2	1.65 (42)	1.02 (26)
3	1.97 (50)	1.30 (33)
4	2.32 (59)	1.57 (40)
5	2.80 (71)	2.05 (52)
6	3.39 (86)	2.60 (66)
7	4.76 (121)	3.70 (94)
8	5.79 (147)	4.72 (120)



BASE ATTACHED BY ADHESIVE APPLIED TO THIS SURFACE.
INTERNAL PRESSURE-SENSITIVE ADHESIVE FIXTURE HOLDS BASE WHILE ADHESIVE CURES.



NOTE: ALL DIMENSIONS IN INCHES (mm)

THREAD DATA

CODE	THREAD SIZE	I.D. MARK
420	.250-20 UNC-2B	U
6M	M6 X 1,0 6H	M

Clamp Body Technology by:

